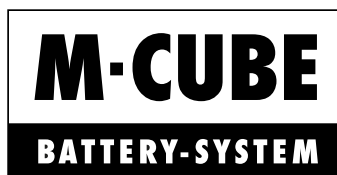


Cordless drywall screwdriver ATS 18 AUTOMATIC M-CUBE



Illustration only



Light and compact cordless drywall screwdriver with automatic function, developed by Wurth to meet the needs of tradespeople

Automatic function

If the switch is locked in AUTOMODE, the motor will only be triggered by the contact pressure of the positioned screw. As a result, pleasant, energy-saving and low-noise working is achieved.

Quick-change bit holder

Fast and convenient bit changes, e.g. when working in conjunction with the optional attachment device.

Depth stop

Easy adjustment of screw depth for cleaner working results.

Continuous monitoring of the motor

The electronic motor protection function switches the motor off ahead of time in the event of blockage, overloading or overheating.

Long motor service life

Efficient, low-maintenance, brushless EC motor with power reserves. Also maintains a more stable speed curve under load.

Well-lit working area

LED lamp on the battery block.

Convenient, effortless work

Highly compact and ergonomic design with low weight.

Nominal voltage	18 V/DC
Min./max. idle speed	0-5000 rpm
Max. torque	5 Nm
Max. screw diameter	5 mm
Tool holding device	1/4-inch quick-action chuck
Weight of machine with rechargeable battery	1.35 kg
Height	183 mm
Length	235 mm
Width	52 mm

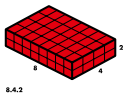
2-year Würth power tool guarantee on wear and tear damages and replacement of batteries and chargers.

The guarantee is subject to the current terms and conditions, which must be followed.

2 Years Warranty on manufacturing and material defects

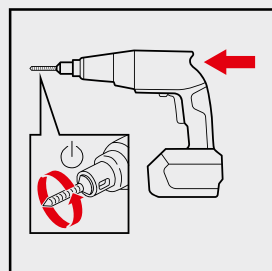
Excluded are damages caused by improper use, overloading or failure to observe the operating instructions.

Included in delivery	Art. no.	P. Qty.
Batteries not included; additional accessories not included	5701 409 000	1
With two 2 Ah batteries; incl. attachment	5701 409 004	1



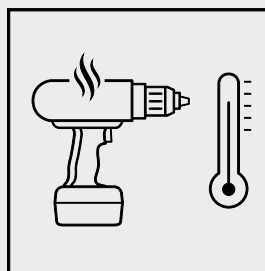
Case in 8.4.2 format compatible with many other Würth system cases.

Details/Application



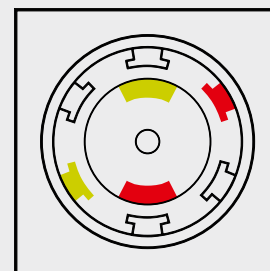
Automatic function:
If the switch is locked in AUTOMODE, the motor will only be triggered by the contact pressure of the positioned screw. As a result, pleasant, energy-saving and low-noise working is achieved.

Electronic motor protection function:



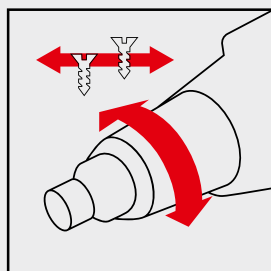
Continuous motor monitoring increases its service life, since the motor is shut off quickly in the event of overloading, overheating or a jam.

Brushless Motor:



Longer working life of the EC-motors, low-maintenance, as carbon brushes do not have to be changed. More efficient and powerful motor in a smaller size.

Details/Application



Depth stop:
Easy adjustment of screw depth for cleaner working results.

Notice

✓ **WÜRTH M-CUBE battery system**

✗ **CV battery system**

Contents for art. no. 5701 409 004

Designation	Art. no.	Quantity
E 6.3 PH bit (1/4 inch) PH2; 148 mm	0614 100 215	3
C 6.3 PH bit (1/4 inch) PH2; Length 25 mm	0614 176 461	1
Universal holder E 6.3 (1/4") With stainless steel sleeve, snap ring and permanent magnet 50 mm	0614 176 754	1
Cordless drywall screwdriver ATS 18 AUTOMATIC M-CUBE Included in delivery Batteries not included; additional accessories not included	5701 409 000	1
Attachment MSV 55-TS For ATS 18 AUTOMATIC M-CUBE	5701 421 000	1
Rechargeable battery Li-ion 18 V BASIC M-CUBE	5703 420 000	2
ALG 18 V M-CUBE charger	5705 180 000	1
Case insert for MASTER/M-CUBE power tools ATS 18 AUTOMATIC	5801 842 409	1
System case 8.4.2	5581 011 000	1

Related products

	Art. no.
18 V M-CUBE W-CONNECT Li-ion rechargeable battery 5 Ah	5703 550 000
Dry wall screw with double thread, collated	0179 339 35
Dry wall screw with double-start thread	0189 039 35
Cetus®X-treme 65KB safety goggles	0899 102 382

Related products for

Designation	Art. no.
E 6.3 PH bit (1/4 inch) PH2; 148 mm	0614 100 215
C 6.3 PH bit (1/4 inch) PH2; Length 25 mm	0614 176 461
Universal holder E 6.3 (1/4") With stainless steel sleeve, snap ring and permanent magnet 50 mm	0614 176 754
System case 8.4.2	5581 011 000
Attachment MSV 55-TS For ATS 18 AUTOMATIC M-CUBE	5701 421 000
Rechargeable battery Li-ion 18 V BASIC M-CUBE	5703 420 000
Rechargeable battery Li-ion 18 V BASIC M-CUBE	5703 450 000
Rechargeable battery Li-ion 18 V BASIC M-CUBE	5704 180 000
ALG 18 V M-CUBE charger	5705 180 000
ALG 18 V M-CUBE charger	5705 860 000
Case insert for MASTER/M-CUBE power tools ATS 18 AUTOMATIC	5801 842 409

Related products for	Designation	Art. no.
5701 409 004	C 6.3 PH bit (1/4 inch) PH2; Length 25 mm	0614 176 461
	Universal holder E 6.3 (1/4") With stainless steel sleeve, snap ring and permanent magnet 50 mm	0614 176 754
	Rechargeable battery Li-ion 18 V BASIC M-CUBE	5703 450 000
	Rechargeable battery Li-ion 18 V BASIC M-CUBE	5704 180 000
	ALG 18 V M-CUBE charger	5705 180 000
	ALG 18 V M-CUBE charger	5705 860 000