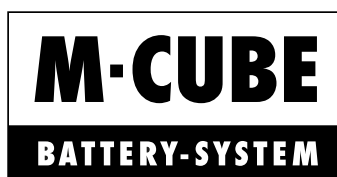


Cordless drill driver ABS 18 COMPACT



Illustration only



Compact, powerful brushless cordless drill driver for medium-duty screwing and drilling work

- Continuous monitoring of the motor, as the electronic motor protection function switches it off early in the event of a blockage, overload or overheating
- Efficient, low-maintenance, brushless EC motor with power reserves and long service life, maintains a more stable speed curve even under load
- The LED light on the battery block ensures a well-lit work area
- Comfortable, effortless work thanks to the very compact and ergonomic design with low weight

Maximum service life and low wear

- 13 mm Röhmmetal drill chuck with soldered carbide clamping jaws
- Electronic signal switch

Nominal voltage	18 V/DC
Idle speed 1st/2nd gear min./max.	0-600/0-1900 rpm
Max. torque hard/soft	60/34 Nm
Min./max. drill chuck span width	1.5-13 mm
Max. drilling diameter in steel	13 mm
Max. screw diameter	10 mm
Length	175 mm
Height	200 mm
Weight of machine with rechargeable battery	1.9 kg

Warranty

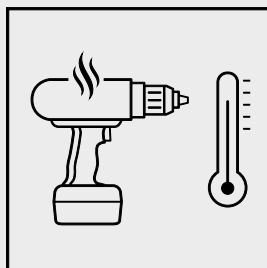
2 Years Warranty on manufacturing and material defects. Excluded are damages caused by improper use, overloading or failure to observe the operating instructions. 2 Years Warranty on batteries. The current WÜRTH MASTER warranty conditions must be observed.

Number of rechargeable batteries/batteries	Rechargeable battery/battery capacity	Art. no.	P. Qty.
0 PCS	0 Ah	5701 427 000	1
2 PCS	5 Ah	5701 427 005	1

Details/Application

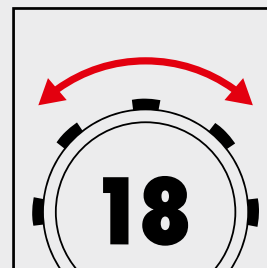


Electronic motor protection function:



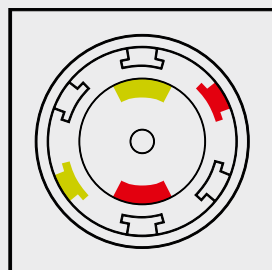
Continuous motor monitoring increases its service life, since the motor is shut off quickly in the event of overloading, overheating or a jam.

18-stage adjustment:

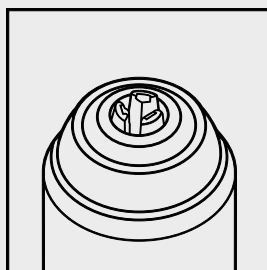


Precise and effective working through ideal torque setting and optimum throughput.

Brushless motor:



Longer working life of the EC-motors, low-maintenance, as carbon brushes do not have to be changed. More efficient and powerful motor in a smaller size.



Drill chuck:
13 mm solid metal drill chuck with carbide jaws for optimal retention of the clamped tool.

Contents for art. no. 5701 427 005

Designation	Art. no.	Quantity
System case 8.4.2	5581 011 000	1
Rechargeable battery Li-ion 18 V BASIC M-CUBE 5 Ah	5703 450 000	2
Charger ALG 18 V M-CUBE ALG 18/6 FAST	5705 860 000	1
Case insert for MASTER machines	5801 882 800	1

Related products

	Art. no.
System case 8.4.2	5581 011 000
Rechargeable battery Li-ion 18 V BASIC M-CUBE 2 Ah	5703 420 000
Rechargeable battery Li-ion 18 V BASIC M-CUBE 5 Ah	5703 450 000
Rechargeable battery Li-ion 18 V BASIC M-CUBE 4 Ah	5704 180 000
Charger ALG 18 V M-CUBE ALG 18/4 BASIC	5705 180 000
Charger ALG 18 V M-CUBE ALG 18/6 FAST	5705 860 000
Case insert for MASTER machines	5801 882 800
Twist drill HSS DIN 338 SMART STEP	0624 930 600
Precision wood twist drill bit HSCo	0650 810 800
Combi screw tap HSCo multi performance	0658 500 600
Stepped twist drill bit HSS Multi Performance TiAlN	0694 458 630
Safety goggles Cetus®X-treme	0899 102 380