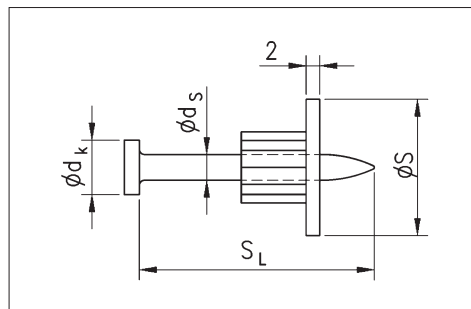
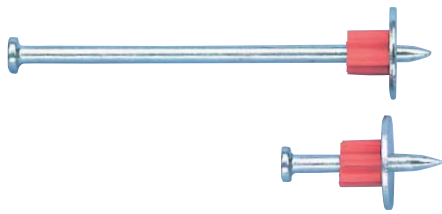


# NAIL

07



## UNS 104 with steel washer

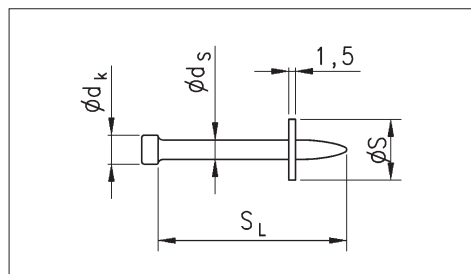
- Universal nail for concrete surface in accordance with DIN EN 206-1 and DIN 1045.
- For length calculation, see Direct Assembly brochure.

Shaft length SL in mm	Shaft dia. ds in mm	Washer dia. S in mm	Head dia. dk in mm	Device categories								Art. No.	P. Qty.	
				A	B	C	D	E	F	G	H			
27	3.7	20	8	x	x	x				x		x	<b>0864 104 027</b>	100
32	3.7	20	8	x	x	x				x		x	<b>0864 104 032</b>	100
37	3.7	20	8	x	x	x				x		x	<b>0864 104 037</b>	100
42	3.7	20	8	x	x	x				x		x	<b>0864 104 042</b>	100
47	3.7	20	8	x	x	x				x	x	x	<b>0864 104 047</b>	100
52	3.7	20	8	x	x	x					x	x	<b>0864 104 052</b>	100
57	3.7	20	8	x	x	x					x	x	<b>0864 104 057</b>	100
62	3.7	20	8	x	x	x					x	x	<b>0864 104 062</b>	100
72*	3.7	20	8	x	x	x					x	x	<b>0864 104 072</b>	100
90*	3.7	20	8	x	x	x					x	x	<b>0864 104 090</b>	100

\* Must be knocked in beforehand with a hammer.

# ROUND-HEADED NAIL

08



## NK 700 with steel washer

- Universal nail for steel and concrete surfaces.
- Device category E only.
- For length calculation, see Direct Assembly brochure.

Shaft length SL in mm	Shaft dia. ds in mm	Washer dia. S in mm	Head dia. dk in mm	Device categories								Art. No.	P. Qty.	
				A	B	C	D	E	F	G	H			
14	3.7	12	5.6					x					<b>0864 700 014</b>	100
16	3.7	12	5.6					x					<b>0864 700 016</b>	100
19	3.7	12	5.6					x					<b>0864 700 019</b>	100
22	3.7	12	5.6					x					<b>0864 700 022</b>	100
27	3.7	12	5.6					x					<b>0864 700 027</b>	100
32	3.7	12	5.6					x					<b>0864 700 032</b>	100
37	3.7	12	5.6					x					<b>0864 700 037</b>	100
42	3.7	12	5.6					x					<b>0864 700 042</b>	100
47	3.7	12	5.6					x					<b>0864 700 047</b>	100
54	3.7	12	5.6					x					<b>0864 700 054</b>	100
62	3.7	12	5.6					x					<b>0864 700 062</b>	100
72	3.7	12	5.6					x					<b>0864 700 072</b>	100
82	3.7	12	5.6					x					<b>0864 700 082</b>	100
97	3.7	12	5.6					x					<b>0864 700 097</b>	100

Please observe the corresponding device category when selecting your fasteners.

**Device categories:**

- A Würth DIVA® 1/Premium
- B Würth BST1, BST 2/Berner BSG 2, 200, 201
- C Spit P 60, P 200
- D Hilti DX 351

- E Hilti DX 450
- F Hilti DX A40
- G Hilti DX A41
- H Hilti DX 350, DX 36M, DX 460